



INSTRUCTION BULLETIN

No. 9045137
Machine: S16
Published: 09-2021
Rev. 00

NOTE: DO NOT DISCARD the Parts List from the Instruction Bulletin. Place the Parts List in the appropriate place in the machine manual for future reference. Retaining the Parts List will make it easier to reorder individual parts and will save the cost of ordering an entire kit.

NOTE: Numbers in parenthesis () are reference numbers for parts listed in Bill of Materials.

Installation instructions for **kit number 9045108**

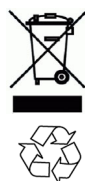
Kit installation must be performed by TennantTrue® service or an authorized service provider.

SYNOPSIS:

This kit contains the parts needed to install dust control skirts onto S16 sweepers equipped with optional dual side brushes.
Please follow step-by-step instructions.

SPECIAL TOOLS / CONSIDERATIONS: Loctite® 598 Black sealant (or similar product)

(Estimated time to complete: 2 hours)



PROTECT THE ENVIRONMENT

Please dispose of packaging materials, used machine components such as batteries and fluids in an environmentally safe way according to local waste disposal regulations.

Always remember to recycle.

PREPARATION:

FOR SAFETY: Before leaving or servicing machine, stop on level surface, turn off machine, and remove key.

1. Remove both wheels from the front of the machine. Set both wheels, clevis pins, and cotter pins aside. (Fig. 1)



FIG. 1

INSTALLATION:

1. Remove the brush door from the left side of the machine. Discard the brush door and all mounting hardware. (Fig. 3)



FIG. 2

2. Measure the height and width of the new brush compartment access door (19). (Fig. 3)

Loctite® is a registered trademark of the Henkel Corporation.

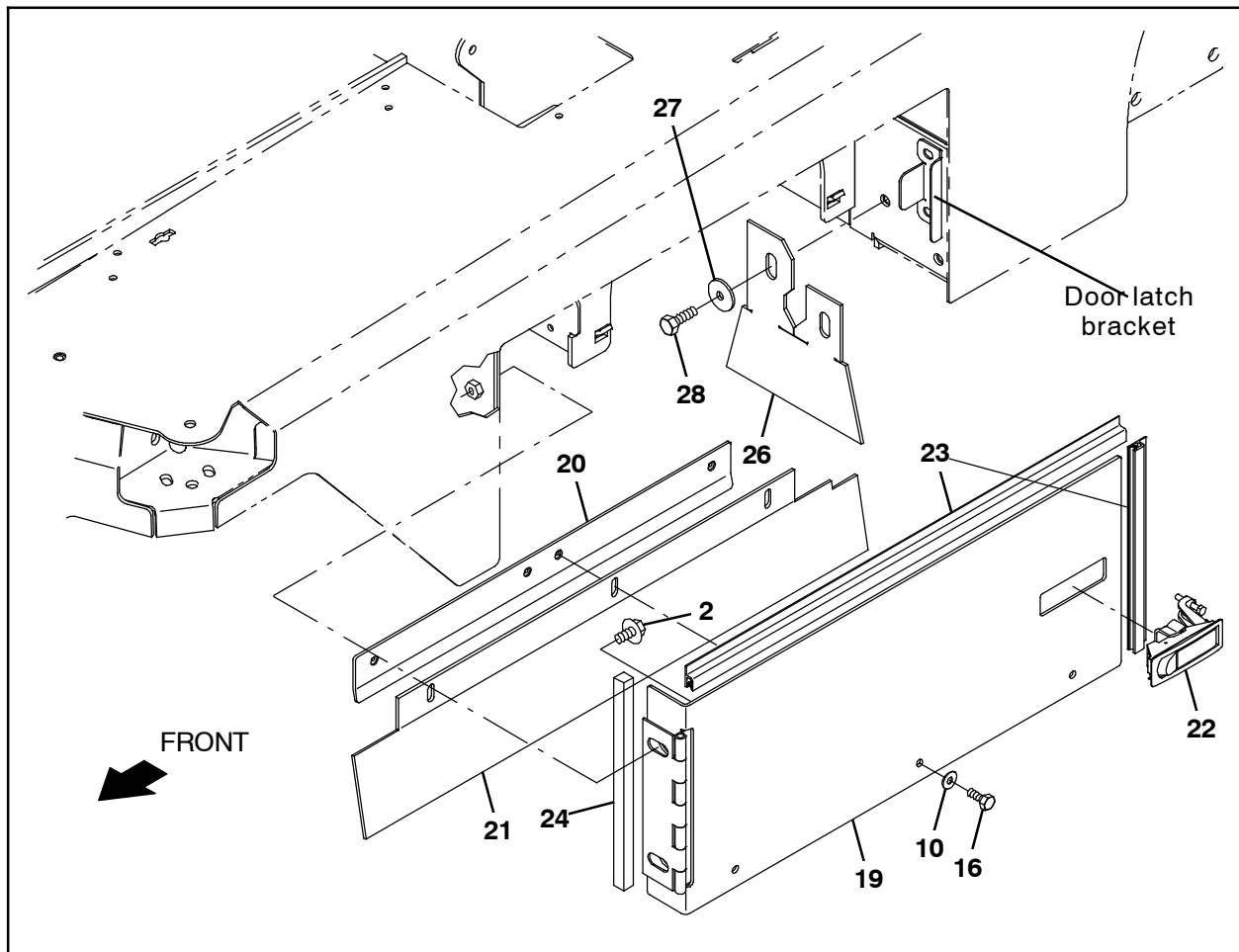


FIG. 3

3. Cut the wiper seal (23) to the height and width lengths measured on the brush compartment access door (19) in the previous step. (Fig. 3)
4. Install the cut lengths of wiper seal (23) onto the brush compartment access door (19). (Fig. 3)
5. Install the rubber seal (24) onto the brush compartment access door (19). (Fig. 3)
6. Use three M6 hex screws (16) and three flat washers (10) to install the skirt retainer bracket (20) and door skirt (21) onto the brush compartment access door (19). Do not completely tighten the M6 hex screws. The M6 hex screws are tightened during later adjustment. (Fig. 3)
7. Install the latch (22) into the brush compartment access door (19). (Fig. 3)
8. Use two SEMS M8 hex screws (2) to install the brush compartment access door (19) onto the machine. (Fig. 3)

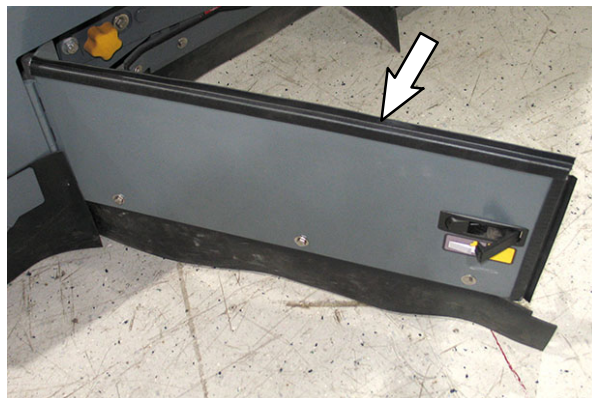


FIG. 4

9. Attempt to close and secure the brush compartment access door (19). (Fig. 3)

If surface of brush compartment access door is not flush with outer edge of the frame of machine, adjust the position of the door latch bracket on the frame of the machine until door is flush. (Fig. 3)

If it is difficult to use the latch (22) to secure brush compartment access door closed, adjust the latch as necessary so door can be secured. (Fig. 3)

10. Use two M8 hex screws (28) and two flat washers (27) to install one rear side skirt (26) onto the machine. (Fig. 5/Fig. 3)

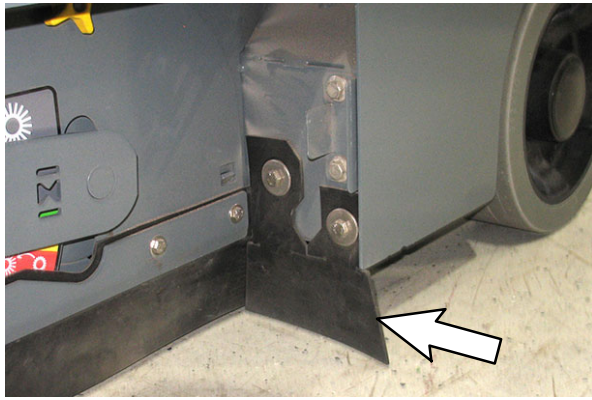


FIG. 5

11. Observe the distance of bottom of the door skirt (21) to the floor. The bottom edge of the door skirt should be barely touching or just slightly above the floor. (Fig. 3)

12. Adjust the door skirt (21) as necessary and tighten the three M6 hex screws (16) to completely secure the floor skirt to the brush compartment access door (19). (Fig. 3)

13. Remove the brush door stop plate from the right side of the machine. Discard the brush door stop plate and all mounting hardware. (Fig. 6)



FIG. 6

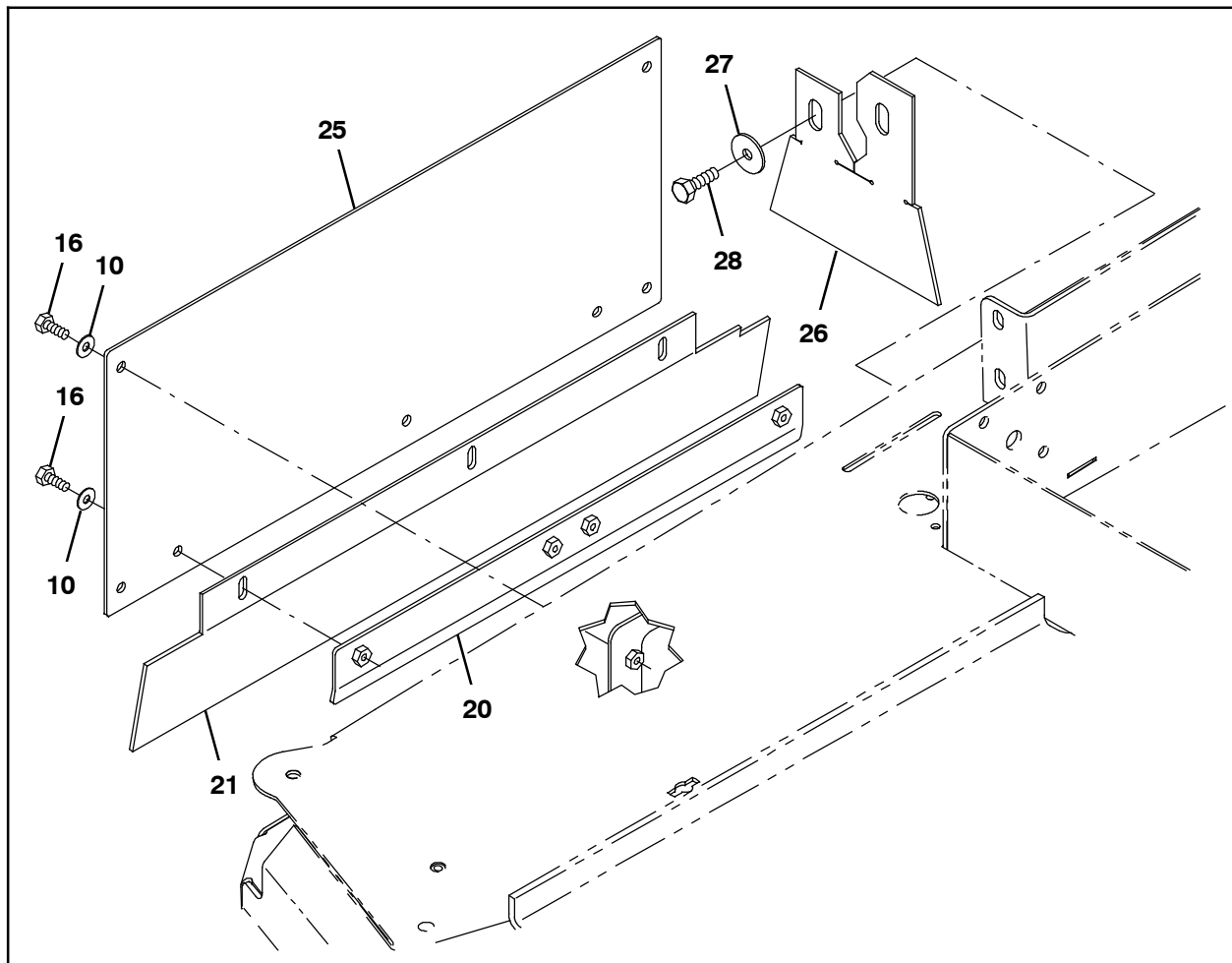


FIG. 7

14. Use three M6 hex screws (16) and three flat washers (10) to install the skirt retainer bracket (20) and door skirt (21) onto the new brush skirt door plate (25). Do not completely tighten the M6 hex screws. The M6 hex screws are tightened during later adjustment. (Fig. 7)
15. Use two M8 hex screws (28) and two flat washers (27) to install the remaining rear side skirt (26) onto the machine. (Fig. 7/Fig. 5)
16. Use four M6 hex screws (16) and four flat washers (10) to install the brush skirt door plate (25) onto the machine. (Fig. 7)
17. Observe the distance of bottom of the door skirt (21) to the floor. The bottom edge of the door skirt should be barely touching or just slightly the floor. (Fig. 7)
18. Adjust the door skirt (21) as necessary and tighten the three M6 hex screws (16) to fully secure the floor skirt to the brush skirt door plate (25). (Fig. 7)

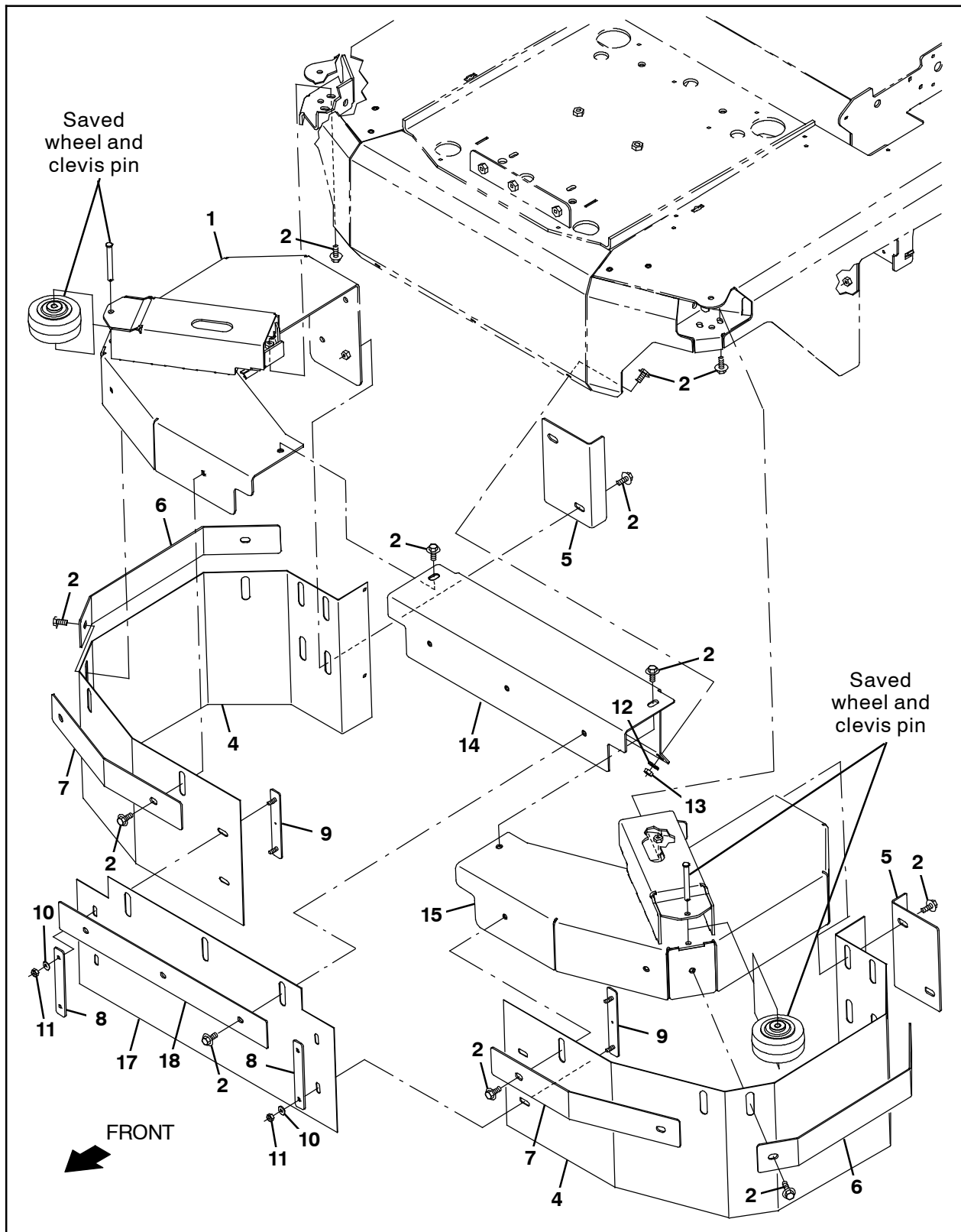


FIG. 8

19. Place the right skirt bumper bracket (1) onto the machine, push the right skirt bumper bracket against the frame of the machine, and use one SEMS M8 hex screw (2) to install the right skirt bumper bracket onto the machine. Do not completely tighten hardware. Hardware is tightened following adjustment. (Fig. 8)
20. Place the left skirt bumper bracket (15) onto the machine, push the left skirt bumper bracket against the frame of the machine, and use one SEMS M8 hex screw (2) to install the left skirt bumper bracket onto the machine. Do not completely tighten hardware. Hardware is tightened following adjustment. (Fig. 8)
21. Use three SEMS M8 hex screws (2), three flat washers (12), and three M8 hex nuts (13) to secure the front skirt bracket (14) to the bumper of the machine. Do not completely tighten hardware. Hardware is tightened following adjustment. (Fig. 8)
22. Use two SEMS M8 hex screws (2) to install the front skirt bracket (14) onto the right skirt bumper bracket (1)/skirt bumper bracket (15). Do not completely tighten hardware. Hardware is tightened following adjustment. (Fig. 8)
23. Adjust the right skirt bumper bracket (1), left skirt bumper bracket (15), and the front skirt bracket (14) on the machine and tighten the SEMS M8 hex screws (2) to completely secure the brackets onto the machine. (Fig. 8)
24. Use two SEMS M8 hex screws (2) to install the skirt retaining bracket (6)/skirt retainer bracket (7) and the side brush skirt (4) onto the right skirt bumper bracket (1). Do not completely tighten hardware. Hardware is tightened following adjustment. (Fig. 8)
25. Use two SEMS M8 hex screws (2) to install the skirt retaining bracket (6)/skirt retainer bracket (7) and the side brush skirt (4) onto the skirt bumper bracket (15). Do not completely tighten hardware. Hardware is tightened following adjustment. (Fig. 8)
26. Use two SEMS M8 hex screws (2) to install the front skirt strap (18) and the front skirt (17) onto the front skirt bracket (14). Do not completely tighten hardware. Hardware is tightened following adjustment. (Fig. 8)

27. Observe the distance of both side brush skirts (4) and the front skirt bracket (14) to the floor. The bottom edge of all three skirts should be barely touching or just slightly above the floor. (Fig. 8)
28. Adjust both side brush skirts (4) and the front skirt (17) as necessary and tighten the hardware to completely secure all three skirts to the machine. (Fig. 8)
29. Use a skirt retainer bracket (9), skirt retainer plate (8), two flat washers (10), and two M6 hex nuts (11) to completely secure each side brush skirt (4) to the front skirt (17). (Fig. 9/ Fig. 8)

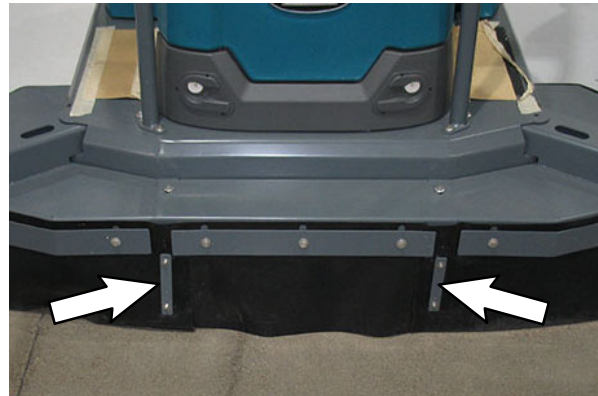


FIG. 9

30. Neatly arrange the side brush skirt (4) between the right skirt bumper bracket (1) and skirt retaining bracket (5) and use two SEMS M8 hex screws (2) to secure the skirt retaining bracket onto the side brush skirt/right skirt bumper bracket. (Fig. 10/ Fig. 8)



FIG. 10

31. Neatly arrange the side brush skirt (4) between the left skirt bumper bracket (15) and skirt retaining bracket (5) and use two SEMS M8 hex screws (2) to secure the skirt retaining bracket onto the side brush skirt/left skirt bumper bracket. (Fig. 9/ Fig. 8)

32. Use a saved clevis pin to install a wheel into both the right skirt bumper bracket (1) and the skirt bumper bracket (15). (Fig. 8)
33. Use Loctite 598 Black sealant (or similar sealant) to seal the gap between the right skirt bumper bracket (1), left skirt bumper bracket (15), and front skirt bracket (14) and the frame of the machine. (Fig. 8)

34. Turn on and test the machine. Drive the machine over a dusty environment and observe for dust escaping from under the skirts. If there is excessive dust coming from under or between the skirts, stop the machine and adjust the skirts.

Bill Of Materials For Dust Control Kit, Dual SB, DI - 9045108

Ref.	Tennant Part No.	Description	Qty.
1	1248685	Bracket Wldt, Bumper, Skirt, RH	1
2	1020341	Screw, Hex, M8 X 1.25 X 20, SS, SEMS	26
4	1247760	Skirt, Brush, Side	2
5	1248217	Bracket, Retaining, Skirt	2
6	1248191	Bracket, Retaining, Skirt	2
7	1248190	Bracket, Retainer, Skirt	2
8	1248220	Plate, Retainer, Skirt, HEPA	2
9	1239938	Bracket Wldt, Retainer, Skirt	2
10	01684	Washer, Flat, 0.27b 0.69d .05, SS	14
11	08712	Nut, Hex, Lock, M6 X 1.00, NI, SS	4
12	01685	Washer, Flat, 0.38b 0.88d .08, SS	3
13	08709	Nut, Hex, Lock, M8 X 1.25, NI	3
14	1240505	Bracket Wldt, Skirt, Front	1
15	1240563	Bracket Wldt, Bumper, Skirt	1
16	12277	Screw, Hex, M6 X 1.00 X 20, NI, SS	12
17	1248082	Skirt, Front	1
18	1240509	Strap, Skirt, Front	1
19	1240413	Door Wldt, Skirt	1
20	1248826	Bracket Wldt, Retainer, Skirt, HEPA	2
21	1240417	Skirt, Door	2
22	398806	Latch	1
23	1066840	Seal, Afmkt, Wiper, 03ft	1
24	9045133	Seal, Rbr, Clsd, .50, .50w, Adh, Afmkt	1
25	1248827	Plate, Door, Brush, Skirt	1
26	1247551	Skirt, Rear, Side	2
27	1016331	Washer, Flat, 0.34b 1.25d .11, SS	4
28	1016399	Screw, Hex, M8 X 1.25 X 30, NI, SS	4

TENNANT COMPANY
P. O. Box 1452
Minneapolis, MN 55440-1452